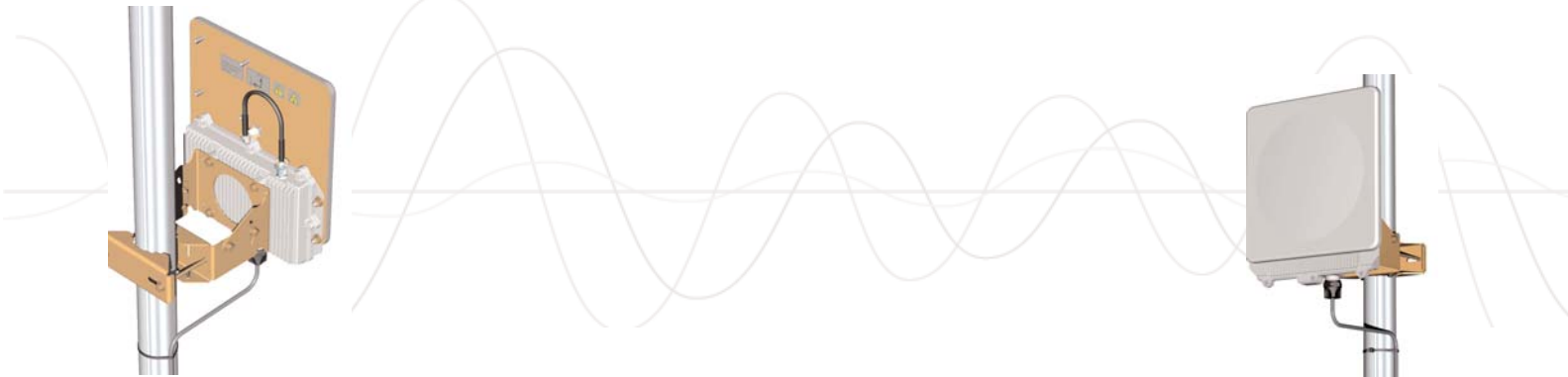


## RedCONNEX AN-80i Advanced Broadband Wireless Infrastructure Solution



### Features:

- Operates in license-exempt 5.4 and 5.8GHz bands
- Industry leading 108Mbps uncoded burst rate with up to 90Mbps Ethernet throughput
- Exceptional long-range capabilities
- Lowest end-to-end latency in its class
- Flexible channel size and speed selections
- Dynamic time division duplex (TDD) transmission
- Point to Point and Point to Multipoint
- All outdoor configuration with IEEE 802.3af PoE

The AN-80i is the latest addition to Redline's RedCONNEX™ family of high-performance wireless broadband transport solutions. Delivering carrier-grade performance and reliability that network operators and other service providers have come to expect from Redline's wireless access and backhaul products, the RedCONNEX AN-80i is the ideal solution for quickly establishing point-to-point and point-to-multipoint links that cost-effectively extend networks and reach more customers.

Operating in the license-exempt 5 GHz band, Redline's RedCONNEX AN-80i leverages proven OFDM technology to deliver industry-leading, high-speed Ethernet throughput. With its exceptional long range capabilities, the RedCONNEX AN-80i is able to establish and maintain reliable, robust connectivity that can exceed 80 km (50 miles) in clear line-of-sight conditions.

The RedCONNEX AN-80i is easy and economical to deploy. Available with a wide selection of antennas, the outdoor system includes an audible antenna alignment indicator for quick and simple installation. The indoor Power-over-Ethernet (PoE) injector provides the network Ethernet port and power for the outdoor unit.

The RedCONNEX AN-80i is an excellent choice for companies that require a cost-effective, carrier-grade solution to support advanced applications including transparent LAN, VoIP and high-quality video. The RedCONNEX AN-80i redefines the benchmark for value - giving operators and enterprise users the industry's most cost-effective solution for deploying and expanding wireless network services.

### Industry-Leading Broadband Wireless Solutions

Redline solutions deliver an unmatched combination of range, capacity, security, and reliability, even under the most challenging environmental conditions. Redline's best-in-class data rates and spectral efficiencies conserve valuable spectrum and reduce the cost of providing high-performance access. Redline solutions combine built-in security encryption with robust, extreme distance / high-bandwidth performance to deliver products that provide the reliability network operators and carriers need to grow their systems into the future.

## RedCONNEX AN-80i System Specifications

System Capability:	LOS, optical-LOS, and non-LOS (OFDM)	Over the Air Encryption:	Proprietary private key encryption AES-128 and AES-256 options <sup>2</sup>
RF Band:	5.470-5.725 GHz <sup>1</sup> , TDD 5.725-5.850 GHz <sup>1</sup> , TDD	Network Connection:	10/100 Ethernet (RJ-45)
Channel Size:	10, 20, 40 MHz (software selectable) <sup>2</sup>	System Configuration:	HTTP (Web) interface, SNMPv2, Telnet
Data Rate:	Up to 108 Mbps (uncoded burst rate) <sup>2</sup> Up to 90 Mbps (ethernet rate) <sup>2</sup>	Element Management:	RMS platform support
Max Tx Power:	20 dBm (region specific)	Operating Temp:	-40 to 60 degrees celcius
Rx Sensitivity:	-85 dBm @ 3 Mbps max. (BER of 1x10e-9)	Power Consumption:	Standard IEEE 802.3af (15.4 W Max.)
PoE Cable:	Up to 91m (300 ft)	Power Supply:	110/220/240 VAC 50/60 Hz
Network Attributes:	Transparent bridge, automatic link distance ranging, 802.3x <sup>2</sup> , 802.1p <sup>2</sup> , DHCP pass-through, 802.1Q VLAN <sup>3</sup>	Compliance:	IEC, EN, and UL/CSA 60950 301 489-1, 301 489-17 5.8 GHz Industry Canada RSS 210, FCC part 15, ETSI EN 302 502; 5.4 GHz Industry Canada RSS 210, FCC part 15, ETSI: EN 301 893
Modulation:	BPSK to 64 QAM bidirectional dynamic adaptive <sup>2</sup>		
Dynamic Channel Control:	DFS, ATPC		
MAC:	PTP, PMP, concatenation, fragmentation <sup>3</sup> , ARQ		

1. Availability restricted by regional regulations
2. Point-to-Point mode only
3. Point-to-Multipoint mode only

## RedCARE Support

Redline's complete family of RedCONNEX products is backed by the best support programs in the industry. Redline's exceptional network of highly trained Certified Partners provides responsive customer and solution support everywhere Redline's products are available - all fully backed by Redline's professional support and service experts.

Redline has assembled a truly world-class, multi-lingual partner support organization along with a Technical Assistance Centre staffed by experienced support engineers who ensure you always get the help you need - when you need it most.

## Redline Management Suite (RMS)

The award-winning Redline Management Suite (RMS) is a sophisticated element management solution that gives broadband network operators the ability to easily deploy, control, monitor and upgrade their Redline components network-wide through an intuitive, user-friendly GUI. The RMS acts as a gateway between the Redline equipment in the network and the NMS and OSS/BSS, enabling full automation in the system.

## About Redline Communications

Redline Communications is the leading provider of standards-based wireless broadband solutions. Redline's RedMAX™ WiMAX Forum Certified™ systems and award-winning RedCONNEX™ family of broadband wireless infrastructure products enable service providers and other network operators to cost-effectively deliver high-bandwidth services including voice, video and data communications.

Redline is committed to maintaining its wireless industry leadership with the continued development of WiMAX and other advanced wireless broadband products. With more than 35,000 installations in 75 countries, and a global network of over 100 partners, Redline's experience and expertise helps service providers, enterprises and government organizations roll out the services and applications that drive their business forward.

