

ProximVision GUI is user-friendly and highly intuitive.

**Use ProximVision to manage a range of products from our complete suite of indoor and outdoor broadband wireless solutions.**

**ProximVision supports:**

- **ORiNOCO® Wireless LAN** – The ultimate in enterprise-class 802.11a/b/g functionality, standards-based networking, capacity, security and Quality of Service
- **ORiNOCO® Wireless Mesh** – Enhancing a proven wireless platform with the self-forming, self-healing mesh network capability in outdoor, indoor and in-vehicle solutions
- **Tsunami™ MP.11** – Capabilities of fixed and mobile WiMAX for license-free frequency bands worldwide
- **Tsunami™ MP.16** – WiMAX for the 3.5 GHz frequency band



**A Powerful Tool to Plan, Deploy, Manage and Secure Your Wireless Network**

Want to have complete visibility into your wireless network? Now you can. From one integrated easy-to-use console, ProximVision gives you complete control over your wireless network. Easy to use, ProximVision is a powerful tool to plan, deploy, manage and secure wireless networks. From a central location, this user-friendly application enables end-to-end management of your wireless network – even a global network in various geographic locations.

For your convenience, the appliance is pre-loaded with the ProximVision application. Depending on specific requirements, one can choose the Standard version or Advanced version.

- Automated device discovery across any network infrastructure (WAN or LAN)
- Group-based policy definition for efficient management of large networks
- Centralized device configuration to eliminate manual processes and opportunity for human error
- Compliance audits to enforce your security policies at all times
- Monitoring and configuration of Mesh Access Points
- User-based monitoring for real-time information and rapid trouble-shooting
- Diagnostics and alarms for fast problem resolution
- Integrated reporting package for intelligent planning and performance measurement

**Security**

ProximVision provides a solid foundation to implement your Wi-Fi® security and compliance strategy. With ProximVision you can ensure that your entire mobile infrastructure, including wireless access points and switches, are always configured in strict accordance with your policies.

**Management**

With ProximVision’s easy-to-use interface, the entire network is visible and manageable. For instance, you can control the channel, transmission power, encryption methods and even the firmware version on hundreds of access points simultaneously.

**Visibility**

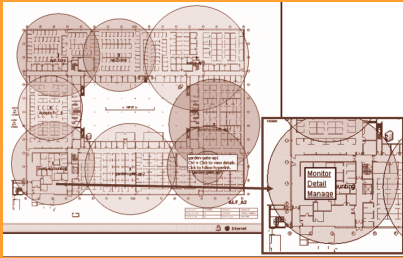
ProximVision’s real-time monitoring screens tell you exactly who is connected to your Wi-Fi network, where they are located, and how the network is performing. ProximVision’s integrated reporting package shows you how your network is being used and helps you intelligently plan for growth.

**ROI**

ProximVision drives down your wireless support costs by eliminating the root cause of many wireless network problems and enabling faster trouble-shooting. Your help desk will quickly resolve most end user issues, freeing your highly trained network engineers to handle more pressing matters.

**Flexibility and Scalability**

With ProximVision you can manage your existing wireless network and future-proof your investment. Packaged in two flavors, Standard and Advanced, ProximVision offers unparalleled flexibility based on required features and the size of your wireless network. Upgrades are also available to accommodate your growing network.



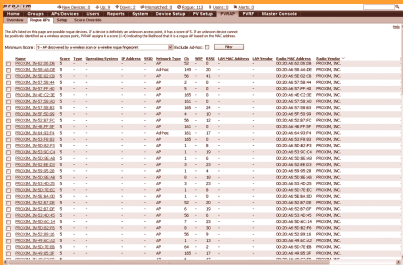
ProximVision Visual RF Module enables a real-time picture of actual radio environment of your wireless network.

### ProximVision VisualRF Visualization Module

You cannot manage what you cannot see. With ProximVision, everything is visible – even the airwaves.

The VisualRF module is a part of ProximVision Advanced version that gives you a real-time picture of the actual radio environment of your wireless network. Using the site maps generated by the ProximVision Wireless Site Plan (PVSP) software, ProximVision VisualRF (PVRF) overlays them with real-time radio information from your APs. Now you can see what RF environment really looks like. Using PVRF, you can see where the wireless coverage is solid, where there are gaps, where users are connected to the wireless network, and even where unauthorized ‘rogue’ access points are attached to your LAN.

- Imports RF site maps from the PVSP software
- Automatically incorporates real-time data from existing Wi-Fi access points and updates site plan
- Presents real-time graphical monitoring views showing RF coverage area, client/user location, rogue AP location and more
- “Before” and “After” views of your RF environment so you can review the impact of proposed changes before implementing
- Requires no additional hardware or RF sensors to gather and display RF data



ProximVision Rogue AP Detection Module adds a layer of security.

### ProximVision Rogue AP Detection Module

Unauthorized ‘rogue’ access points are a critical threat that can expose sensitive corporate data to intruders, and may undercut an organization’s entire regulatory compliance program. Unfortunately, the most likely location for a rogue to be connected to your network is where it is hardest to detect: in remote offices without authorized Wi-Fi networks, hundreds of miles from your headquarters. ProximVision Rogue Access Point (PVRAP) detection module will help you sleep at night, knowing that no unauthorized APs have been connected anywhere without your knowledge.

The PVRAP software solution uses a unique combination of wireless and wired network discovery techniques to detect and locate all rogue APs, wherever they may be. It uses your existing, authorized wireless access points to locate any unknown radios within RF range. PVRAP then scans your wired network to locate any other rogues that may not be within range of your access points. PVRAP correlates results of the wireless and wired scans and delivers you a high-priority alert containing all the information you need to locate and remove the rogue device.

PVRAP integrates with ProximVision VisualRF module to calculate and display the physical location of any rogue access points, using RF data from your existing APs and the ProximVision Management Client (PVMC).

ProximVision rogue AP detection module is part of ProximVision Advanced version.

- Wired network discovery to locate wireless access points anywhere on the network
- Wireless detection of rogues within range of authorized, managed access points
- Correlated alerts containing all data from both wired and wireless scans
- Triangulation of rogue location through integration with the VisualRF module
- No proprietary sensors or hardware required for accurate rogue detection

## ProximVision Wireless Site Plan

An accurate site plan is crucial to deploying and effectively managing a Wi-Fi installation. With ProximVision Wireless Site Plan (PVSP), designing a site plan for a Wi-Fi network doesn't require an RF engineer. And once it's complete, it won't sit in your drawer gathering dust; it will become a living document that enhances intelligent network planning and accelerates problem resolution. The PVSP software is an easy-to-use, Visio-based software application that helps you quickly create an RF site plan for your facility. Once your site plan is complete, you generate reports for your installers to use as they deploy your wireless access points and other infrastructure. Then, when installation is complete, PVSP synchronizes with the ProximVision Management Platform to automatically provision your APs and configure them to match your site plan.

PVSP enhances network security by providing a clear, up-to-date record of the location of all wireless devices for your auditors and compliance officers. By providing a geographic map of your RF airspace, it also makes possible more accurate real-time location tracking of users, 'rogue' access points, and your own wireless APs.

The site plan you generate with PVSP is automatically converted into a graphical VisualRF view, so you can view it on an ongoing basis through ProximVision's browser-based user interface.

- Import any existing graphic to begin to create your wireless site plan
- Drag-and-drop user interface allows you to place access points on the site map quickly and easily
- Automated generation of reports for your network installers
- Automatic provisioning of your wireless APs through synchronization with ProximVision
- Creation of a "Living Site Plan" that is automatically updated by the ProximVision
- Visio-based application for familiarity and ease-of-use

## PROXIMVISION ADDITIONAL FEATURES

Device Discovery	<ul style="list-style-type: none"><li>• Uses SNMP, HTTP, CDP, and other discovery protocols to locate all Wi-Fi devices</li></ul>
Policy Enforcement & Audit	<ul style="list-style-type: none"><li>• Uses group-based 'templates' for efficient centralized management of any number of access points</li><li>• Routinely audits each Wi-Fi device configuration and compares it to policy</li><li>• Immediately alerts and can automatically 'repair' improperly configured devices</li><li>• Routinely audits each Wi-Fi device configuration and compares it to policy</li></ul>
Provisioning & Configuration	<ul style="list-style-type: none"><li>• Integrates with PVSP to automatically configure Wi-Fi devices to match site plan</li><li>• Automatically ensures that all devices are using an approved, up-to-date version of firmware</li><li>• Automated RF channel assignment and management</li></ul>
Monitoring & Diagnostics	<ul style="list-style-type: none"><li>• Monitors every device (including Mesh APs) and user on the wireless network in real-time</li><li>• Identifies and searches for users by username</li><li>• User views show signal strength and roaming history of each user</li><li>• Intelligent diagnostics and automated alerts when problems are detected</li></ul>
Reporting & Visualization	<ul style="list-style-type: none"><li>• Integrated reporting package that includes usage reports, device inventory reports, client session reports, device uptime reports, and more</li><li>• Exports all reports (via XHTML)</li><li>• Automated email distribution lists for key reports</li><li>• Fully customizable reports by group time period, etc.</li></ul>

# ProximVision Technical Specifications

<b>PRODUCT MODELS</b>	
<b>STANDARD:</b>	
200025	ProximVision Appliance Standard Package - Supports 25 nodes
200100	ProximVision Appliance Standard Package - Supports 100 nodes
200200	ProximVision Appliance Standard Package - Supports 200 nodes
10001000	ProximVision Appliance Professional Standard Package - Supports 1000 nodes
<b>ADVANCED:</b>	
200025A	ProximVision Appliance Advanced Package - Supports 25 nodes
200100A	ProximVision Appliance Advanced Package - Supports 100 nodes
200200A	ProximVision Appliance Advanced Package - Supports 200 nodes
10001000A	ProximVision Appliance Professional Advanced Package - Supports 1000 nodes
<b>HARDWARE SPECS</b>	<b>ProximVision 25/100</b> <b>ProximVision 200 and Professional (1000)</b>
PROCESSOR	Intel Core 2 Duo processor, 2.13 GHz Two dual-core Intel Xeon Processors, 2.33 GHz each
FRONT-SIDE BUS SPEED	1066 MHz 1333 MHz
INTERNAL CACHE	2 MB 4 MB per dual-core processor
EXPANSION BUS TYPE	PCI-X PCIe
RISER CARD	One full height, half-length, 64-bit PCI-X slot Two full height, half length PCI Express slots
RAM	2 GB 4 GB
HARD DRIVE	80 GB 146 GB
CD DRIVE	24X internal 24X internal
NETWORK ADAPTER CONNECTOR	Two RJ-45 (for integrated 1-GB network adapters) Two RJ-45 (for integrated 1-GB network adapters)
PS/2-STYLE KEYBOARD CONNECTOR	6-pin mini-DIN USB
PS/2-COMPATIBLE MOUSE CONNECTOR	6-pin mini-DIN USB
SERIAL CONNECTOR	9-pin 9-pin
USB CONNECTORS	Four 4-pin, USB 2.0 compliant connectors Four 4-pin, USB 2.0 compliant connectors
VIDEO CONNECTORS	Two 15-pin VGA connectors Two 15-pin VGA connectors
VIDEO TYPE	Integrated ATI RN50 VGA controller Integrated ATI ES10000 controller
VIDEO MEMORY	16 MB 16 MB
AC POWER	345 W, 100-240 VAC, 50/60 Hz 670 W, 100-240 VAC, 50/60 Hz
<b>PHYSICAL SPECS</b>	
DIMENSIONS	1.65 x 17.6 x 21.5 in (42 x 446 x 546 mm) 1.73 x 19 x 31.1 in (44 x 483 x 790 mm)
WEIGHT	22 lbs (9.98 kg) 34 lbs (15.4 kg)
<b>ENVIRONMENTAL SPECS</b> <b>All Models</b>	
<b>TEMPERATURE</b>	
OPERATING STORAGE	10° to 35°C (50° to 90°F) -40° to 65°C (-40° to 149°F)
<b>RELATIVE HUMIDITY</b>	
OPERATING STORAGE	20% to 80% (non-condensing) with max humidity gradation of 10% per hour 5% to 95% (non-condensing)
<b>MAXIMUM VIBRATION</b>	
OPERATING STORAGE	0.26 G at 5-350 Hz for 15 min (ProximVision Professional 2 min) 1.54 G at 10-250 Hz for 15 min
<b>MAXIMUM SHOCK</b>	
OPERATING STORAGE	One shock pulse of 31 G for up to 2.6 ms Six shock pulses of 71 G for up to 2 ms
<b>ALTITUDE</b>	
OPERATING STORAGE	-16 to 3,048 m (-50 to 10,000 ft) -16 to 10,600 m (-50 to 35,000 ft)
<b>PACKAGE CONTENTS</b>	
One ProximVision Appliance preloaded with appropriate software application, one bezel with key, Versarail package for mounting (with documentation), documentation CD, Quick Install Guide, Regulatory Guide (if needed), Power cords (EU, UK and US), licenses for PVSP and PVMC (advanced models ONLY)	
<b>WARRANTY</b>	
1 year parts and labor	
<b>RELATED PRODUCTS</b>	
ORINOCO Access Points including Mesh APs, Tsunami MP.11 products, Tsunami MP.16, ProximVision Upgrades, Proxim ServPak Extended Support	



Proxim Wireless Corporation  
www.proxim.com

For detailed technical specifications, please go to <http://www.proxim.com/products/proximvision/>

©2007 Proxim Wireless Corporation. All rights reserved. Proxim is a registered trademark and the Proxim logo and ProximVision are trademarks of Proxim Wireless Corporation. All other trademarks mentioned herein are property of their respective owners. Specifications are subject to change without notice.

DS\_0807\_PROXIMVISION\_US