

## FOR WIRELESS THAT WORKS

### VisualRF™ VISUALIZATION MODULE

You cannot manage what you cannot see. With VisualRF, everything in your wireless LAN is visible – even the airwaves.

The VisualRF module is an add-on to the AirWave Management Platform (AMP) that gives you a live picture of your wireless environment. VisualRF overlays your site maps with current radio information gathered by your APs and controllers. Now you can see what your RF environment really looks like at a glance: where the wireless coverage is solid, where there are gaps, where users are located, and where unauthorized ‘rogue’ access points are attached to your LAN.

#### Visibility Increases Efficiency

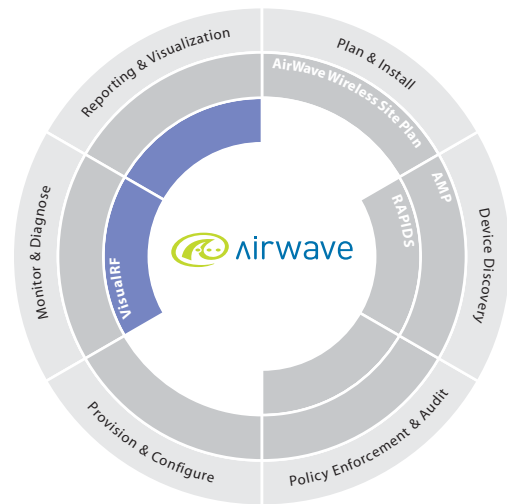
With wireless, a picture is worth more than a thousand words. VisualRF lets you see, from one console, exactly what is happening in all your locations. You can quickly assess use and coverage throughout your WLAN. When you can see what is happening, it is much easier to control and manage it.

#### Security is Strengthened

VisualRF creates a living map of your entire wireless network infrastructure, showing you exactly where each Wi-Fi device and user is at all times. You can view historical information to create a visual audit trail for any device or user. VisualRF even helps you identify where rogue access points are located so you can go and remove them quickly and easily.

#### Management is Fast and Certain

Because VisualRF is fully integrated with the AirWave Management Platform, you can take immediate action based on any information you learn. If you need to increase the transmission power of an AP or change a channel assignment to enhance



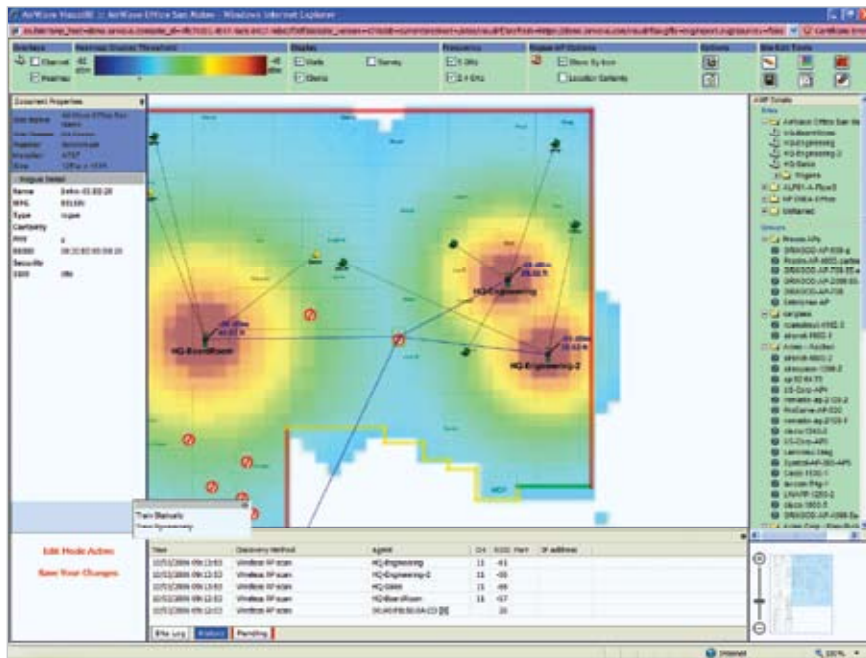
### FEATURES + FUNCTIONALITY

- Imports and creates RF site maps
- Automatically incorporates live RF data from existing Wi-Fi access points
- Presents real-time graphical monitoring views showing RF coverage area, client/user location, rogue AP location, and more
- Requires no additional hardware or RF sensors to gather and display RF data
- Integrates with AMP for seamless implementation of RF changes
- Server software module automatically installs on the same server as your AMP software

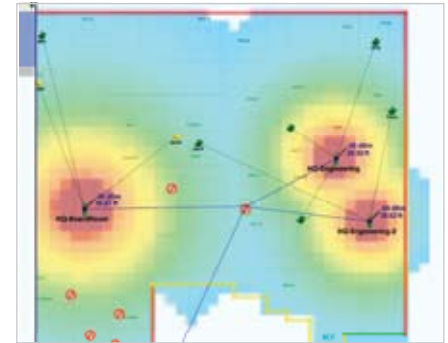
WLAN performance, simply toggle to the AMP screen and make the required change .

#### Wi-Fi ROI

With VisualRF, Help Desk support staff and network engineers alike have all the information they need to quickly diagnose and resolve WLAN issues, driving down Wi-Fi support costs.



- ‘Pan & Zoom’ feature uses Adobe Flash® to zoom in on a detailed subsection of any RF map
- Supports directional antenna settings
- Creates an Adobe PDF of the RF map to provide a permanent record of your RF environment at any time



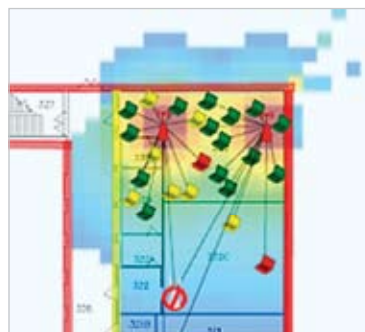
#### Rogue View

- Integrates with the RAPIDS module to place rogue APs on the map for fast location and removal
- Uses RF data from multiple access points and/or the AirWave Management Client to triangulate the likely location of a rogue. Accuracy increases as the number of discovering devices increases
- Displays all known information about the rogue device, including Name, SSID, BSSID, channel, security settings, operational mode, and more
- Lets you view any information about any rogue device discovered via wired network scans

#### Location Data

- Shows where client devices (users) are connected to the WLAN for rapid location identification and troubleshooting
- Uses different icons for each device type (laptop computer, PDA, wireless VOIP phone, etc.). Icons accompanied by username for easy identification
- Icon color reflects current bandwidth use for each client device (red = high utilization, etc.)
- Integrates with AMP so you can quickly click and toggle to a detailed ‘client view’ of any device on the map, accessing all relevant client information.

- Supports both 2.4GHz and 5GHz spectrums
- Recalculates and redisplay coverage areas by data rate and office environment (normal, high-density, or ‘open’ environments)
- Considers antenna settings, receive sensitivity, transmission power, and other manufacturer settings
- Uses color-coded RF channels for easy identification of overlapping channels



#### RF Coverage Maps

- Provides real-time updated coverage maps, showing the physical location and coverage areas of wireless APs, using RF data gathered from access points and the AirWave Management Client

AirWave Wireless  
 1700 South El Camino Real  
 Suite 500  
 San Mateo, CA 94402  
 Phone: (650) 286-6100  
 Fax: (650) 286-6101

www.airwave.com  
 General information: info@airwave.com  
 Sales: sales@airwave.com  
 Technical support: support@airwave.com

VisualRF-53 03/08



© 2008 Aruba Networks, Inc. AirWave®, Aruba Networks®, Bluescanner, For Wireless That Works®, Mobile Edge Architecture, People Move. Networks Must Follow., RFProtect, The All Wireless Workplace Is Now Open For Business, and The Mobile Edge Company® are trademarks of Aruba Networks, Inc. All rights reserved. All other trademarks are the property of their respective owners.

for wireless that works